

Updates

- *In a Heartbeat*
 - Right care at the right time
- MQF Data Web site

***In a Heartbeat* EXECUTIVE COMMITTEE**

WORK GROUPS

**AMI Community
Engagement (ACE)**

**HART
(EMS)**

Metrics and Data

Statewide STEMI Protocol



MUSCLE SAVED

2.5 HOURS

MUSCLE LOST

TIME = MUSCLE



Symptom Onset Time

70 120/80 mm Hg

Symptoms ≤ 12 Hours

PCI Center Arrival ≤ 1 hour from first hospital arrival.

Contraindication to Lytic?

Yes

No

ED MEDS

ASA

BETA BLOCKER

PLAVIX: 300mg

HEPARIN:

Patient transport < 1 1/2 hours: Bolus @ 60units/kg (max 4,000 units)

Patient transport ≥ 1 1/2 hours: either bolus hourly with 12 units/kg or drip @ 12 units/kg/hour

PCI

Phone Numbers Below

TIMI At Risk

Lytic

TIMI Low Risk

LOCAL OPTION: Observe or transfer

Lytic Contraindications

- Any prior intracranial hemorrhage
- Known structural cerebral vascular lesion (e.g. AVM)
- Known malignant intracranial neoplasm
- Ischemic stroke within 3 mos (EXC within 3 hours)
- Suspect aortic dissection
- Active bleeding or bleeding diathesis (EXC menses)
- Significant closed head trauma
- Uncontrolled HTN (SBP>175; DBP>110)
- Current use of anticoagulants

TIMI Risk Criteria

- Previous MI
- Anterior Infarct
- SBP < 100
- HR > 100
- A-Fib or Flutter
- Age > 75
- Killip Class > 11
- Post CPR

DRAFT

Maine Quality Forum
a Service of Dirigo Health

In a Heartbeat
Maine PCI Centers

Central Maine Medical Center
795-7525

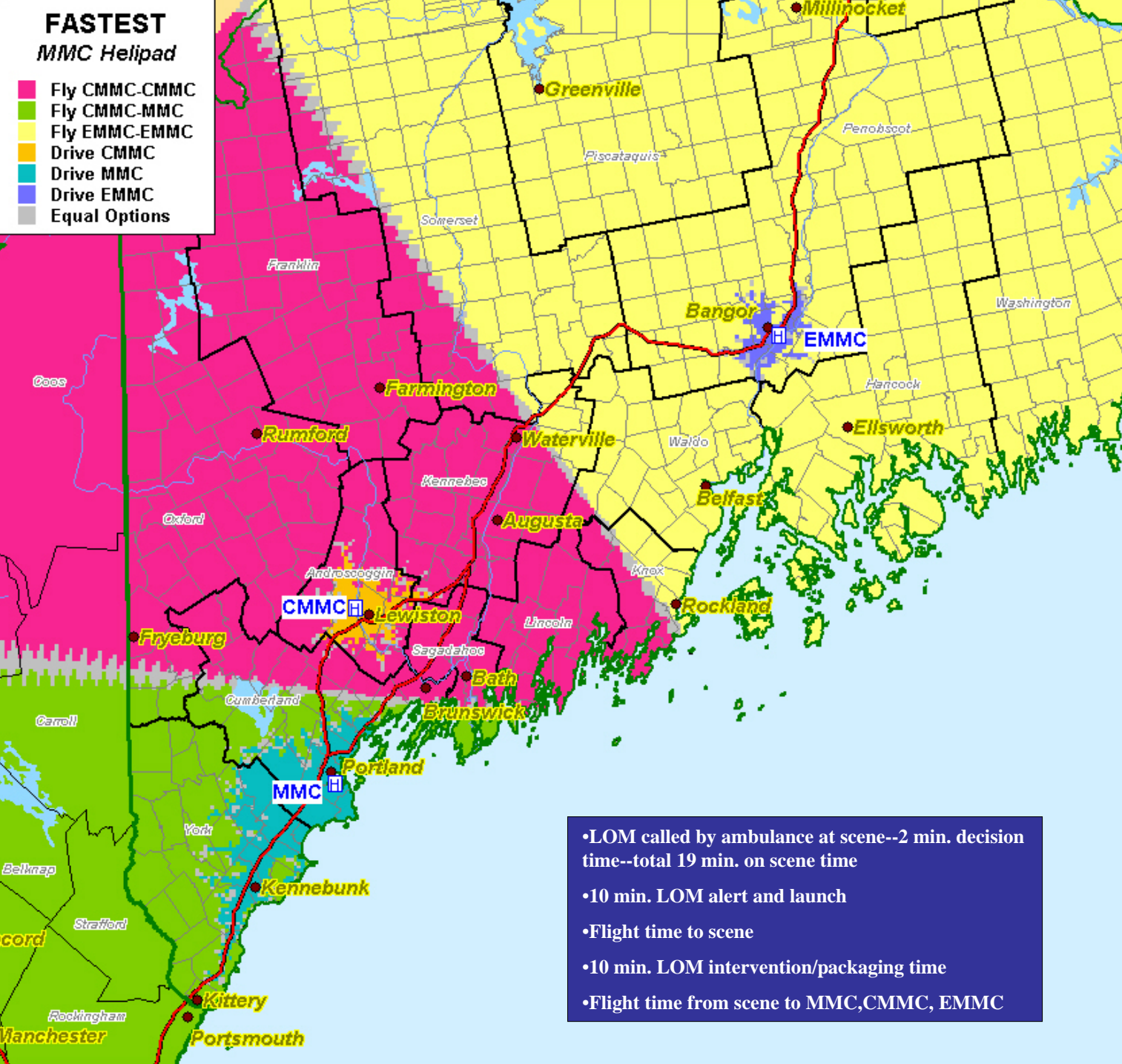
EASTERN MAINE MEDICAL CENTER
947-4940

Maine Medical Center
662-2950

FASTEST

MMC Helipad

- Fly CMMC-CMMC
- Fly CMMC-MMC
- Fly EMMC-EMMC
- Drive CMMC
- Drive MMC
- Drive EMMC
- Equal Options

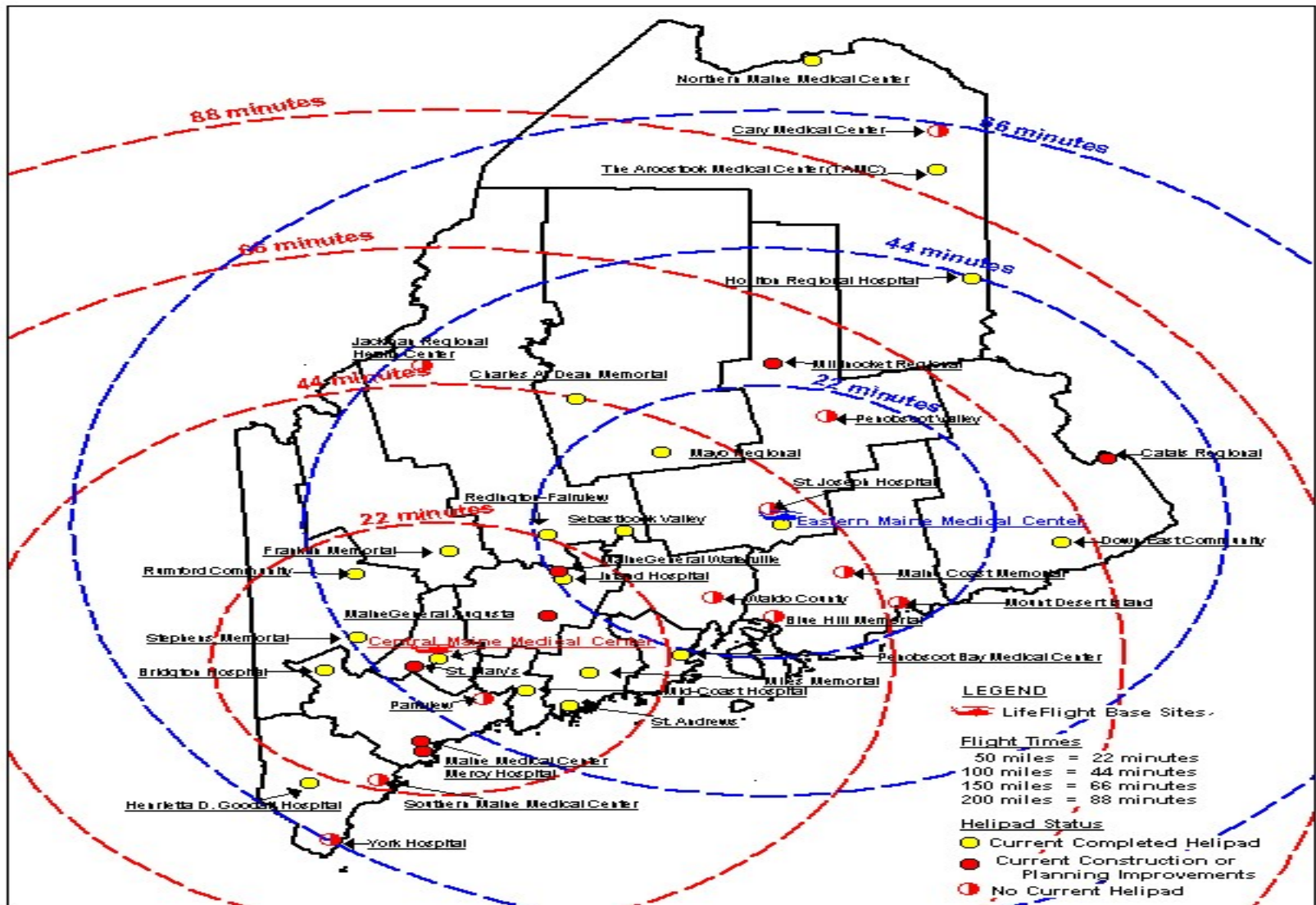


Decision Support Time Modeling

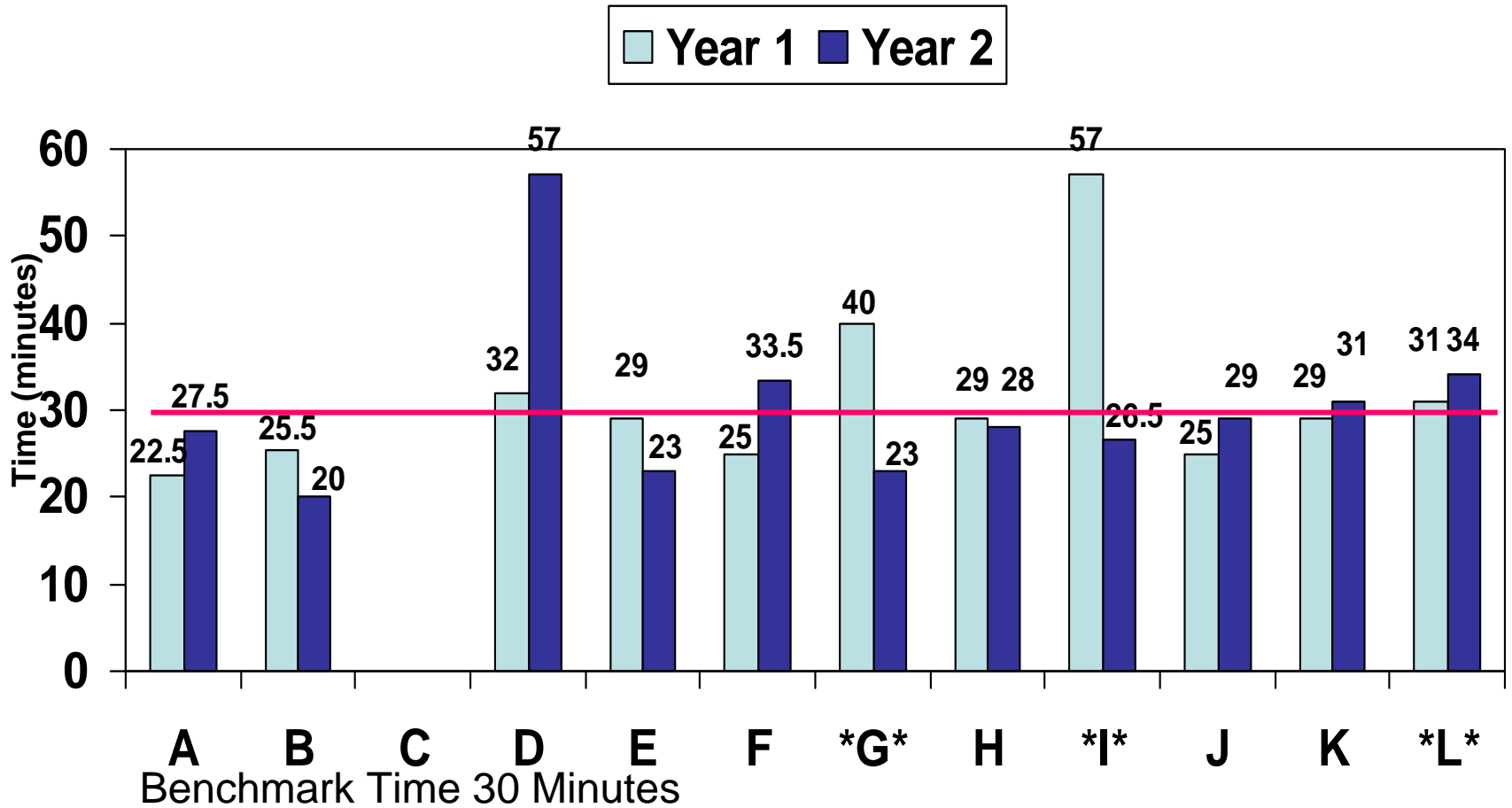
Scenario B;
Helipad at
MMC

- LOM called by ambulance at scene--2 min. decision time--total 19 min. on scene time
- 10 min. LOM alert and launch
- Flight time to scene
- 10 min. LOM intervention/packaging time
- Flight time from scene to MMC,CMMC, EMMC

LifeFlight of Maine Medical Helicopter Flight Time, Coverage and Helipad Status



Door to Drug – Years 1 and 2



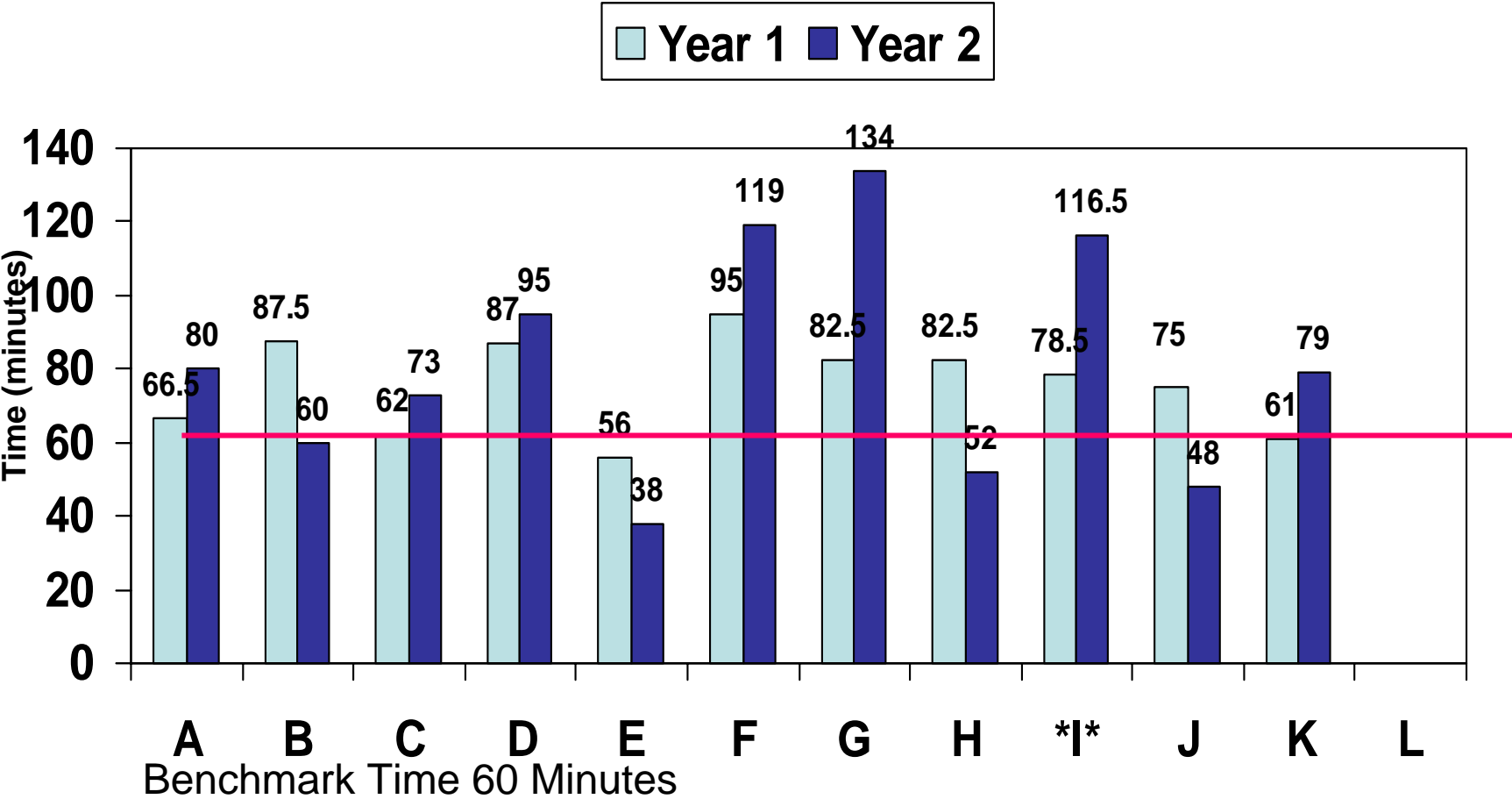
All times are median; *X less than 5 patients represented in Year 1; X* less than 5 patients represented in Year 2

MOF

Dirigo Health Agency

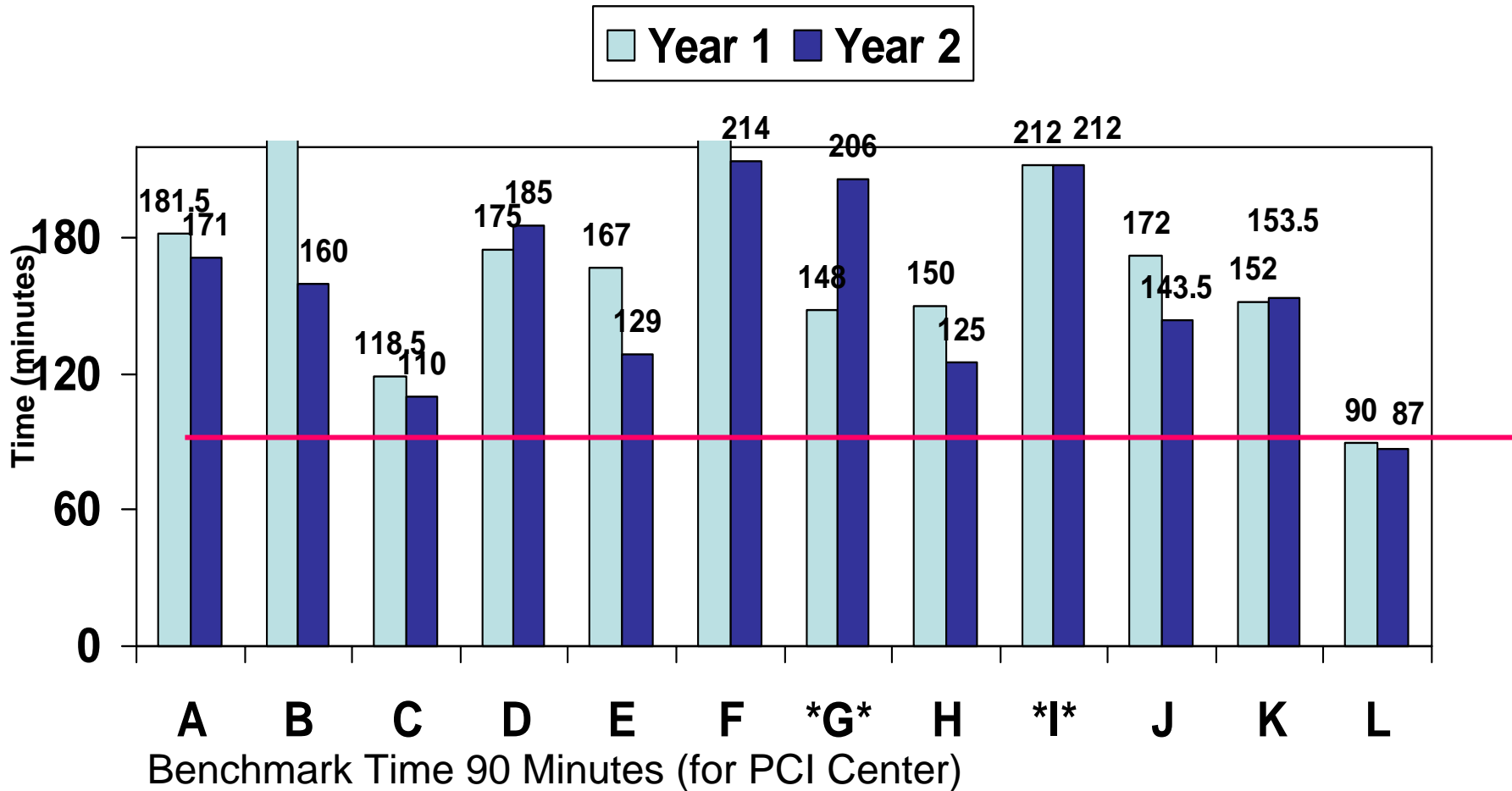
Incomplete without accompanying discussion

Door to Departure – Years 1 and 2



All times are median; *X less than 5 patients represented in Year 1; X* less than 5 patients represented in Year 2
 MQF Incomplete without accompanying discussion
 Dirigo Health Agency

Door to Balloon – Years 1 and 2



All times are median; *X less than 5 patients represented in Year 1; X* less than 5 patients represented in Year 2

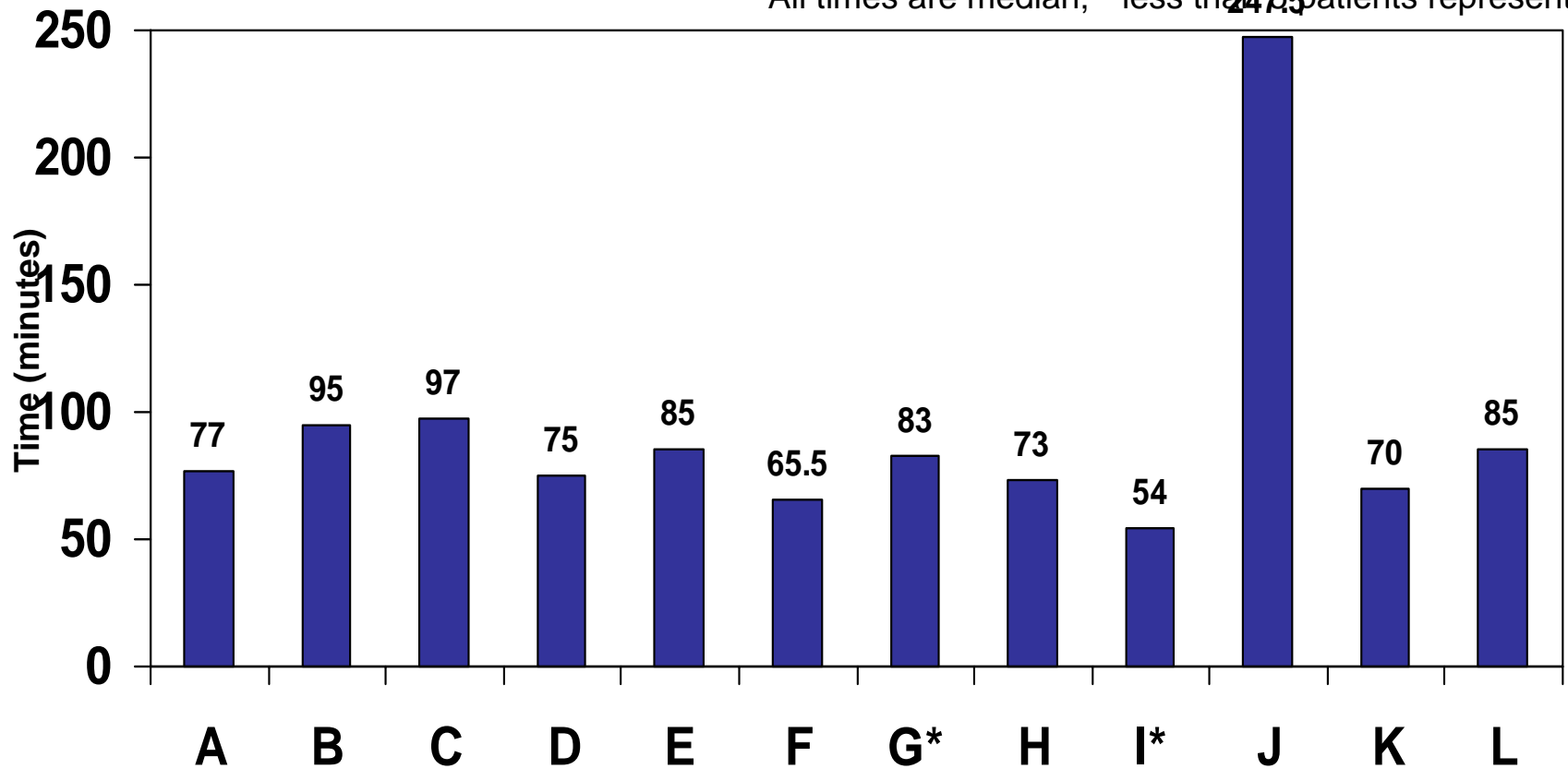
MQF

Dirigo Health Agency

Incomplete without accompanying discussion

Symptom Onset to ED – Year 2

All times are median; * less than 25 patients represented



Why Patients Delay

- Demographic factors associated with delay in seeking care:

Increasing age, being female, low education level, low socioeconomic status, black race

Clinical factors associated with delay:

Less severe or atypical symptoms, chronic medical problems

Why Patients Delay

- Social Factors associated with delay in seeking care:
 - *Location, onset at home*
 - Most AMIs begin at home
 - *Living alone or being alone*
 - *Feelings of embarrassment and the concern of a false alarm*

Learning from the Literature

- 1. target high risk populations
- 2. target the social, cognitive and emotional factors that contribute to delay
- 3. include use of 911 in the message
- 4. explore new methods of delivering the message



Maine Quality Forum

Your guide to high quality health care.

Welcome to the Maine Quality Forum Web Site

- [Quality in Maine](#)
- [Your Health](#)
- [Health Resources](#)
- [Choose Doctor/Hospital](#)
- [Quality Defined](#)
- [Data](#)
- [About Us](#)
- [Links](#)
- [What's New](#)
- [Certificate of Need](#)
- [In a Heartbeat](#)
- [Hospital Safety Guide](#)



Maine Quality Forum

In 2003 Governor Baldacci and your Maine Legislature created the Maine Quality Forum, as an independent division of Dirigo Health, to continue Maine's leadership in assuring high quality healthcare for its citizens.

The Maine Quality Forum's mission is to advocate for high

Insert a link to the [Maine Hospital Quality Snapshots](#) in the MQF navigation menu.

What's New

8/31/06

MQF commends 7 Maine hospitals for sharing their quality data with the public. Click [here](#) to learn more.

7/11/06

MQF adds a new webpage about its recently launched *In a Heartbeat* project. Learn more at the [In a Heartbeat page](#).

3/29/06

Maine Quality Forum

a Service of Dirigo Health

Displayed on page as drop-down menu or as a permanent list – MQF decision needed.

Navigation Menu

[Introduction](#)

Select Hospital

[Methods](#)

[Return to MQF Homepage](#)

How to start:

1. Select a hospital, below, to go to its “performance meter” for all measures.
2. On the first “performance meter” page, you can select other measures from the left Navigation Menu.

Select hospital: [Hospital 200001](#)

[Augusta – Maine General Med Center](#)
[Augusta – Riverview Psychiatric Center](#)
[Bangor – Acadia Hospital](#)
[Bangor – Dorothea Dix Psychiatric Center](#)
[Bangor – Eastern Maine Medical Center](#)
[Bangor – St. Joseph Hospital](#)
[Bar Harbor – Mount Desert Island Hospital](#)
[Belfast – Waldo County General](#)
[Biddeford – Southern Maine Med Center](#)
[Blue Hill – Blue Hill Memorial Hospital](#)
[Boothbay Harbor – St. Andrews Hospital](#)
[Bridgton – Bridgton Hospital](#)
[Brunswick – Mid Coast Hospital](#)
[Brunswick – Parkview Adventist Med Center](#)
[Calais – Calais Regional Hospital](#)
[Caribou – Cary Medical Center](#)
[Damariscotta – Miles Memorial Hospital](#)
[Dover-Foxcroft – Mayo Regional Hospital](#)
[Ellsworth – Maine Coast Memorial Hospital](#)

Only slides 4, 5, and 6 have been changed pending acceptance by MQF (Nov. 7, 2006).

Maine Quality Forum

a Service of Dirigo Health

Navigation Menu

[Introduction](#)

[Select Hospital](#)

Hospital Quality (All Measures)

Treating Diseases

[Heart Disease \(All Measures\)](#)

[Heart Attack](#)

[Heart Failure](#)

[Pneumonia Care](#)

Preventing Infections

[In General Surgery](#)

[In Specialized Surgery](#)

[In Specialized Care](#)

Nursing Care

[Nursing Outcomes](#)

[Nursing Availability & Experience](#)

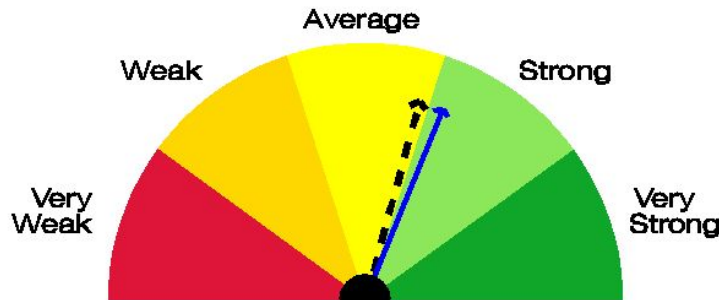
[Data Tables](#)

[Methods](#)

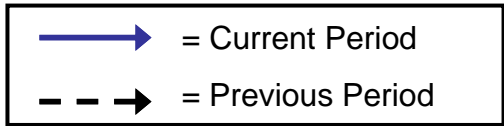
[Advice to Users](#)

[Return to MQF Homepage](#)

What is <HospitalName>'s Performance for <Overall Healthcare Quality> Compared to <All Maine Hospitals> and How Has it Changed?



Performance Meter:
All Measures



How do I read this meter?

To examine all the measures behind this performance meter, click on the meter.

My Hospital Compared with:

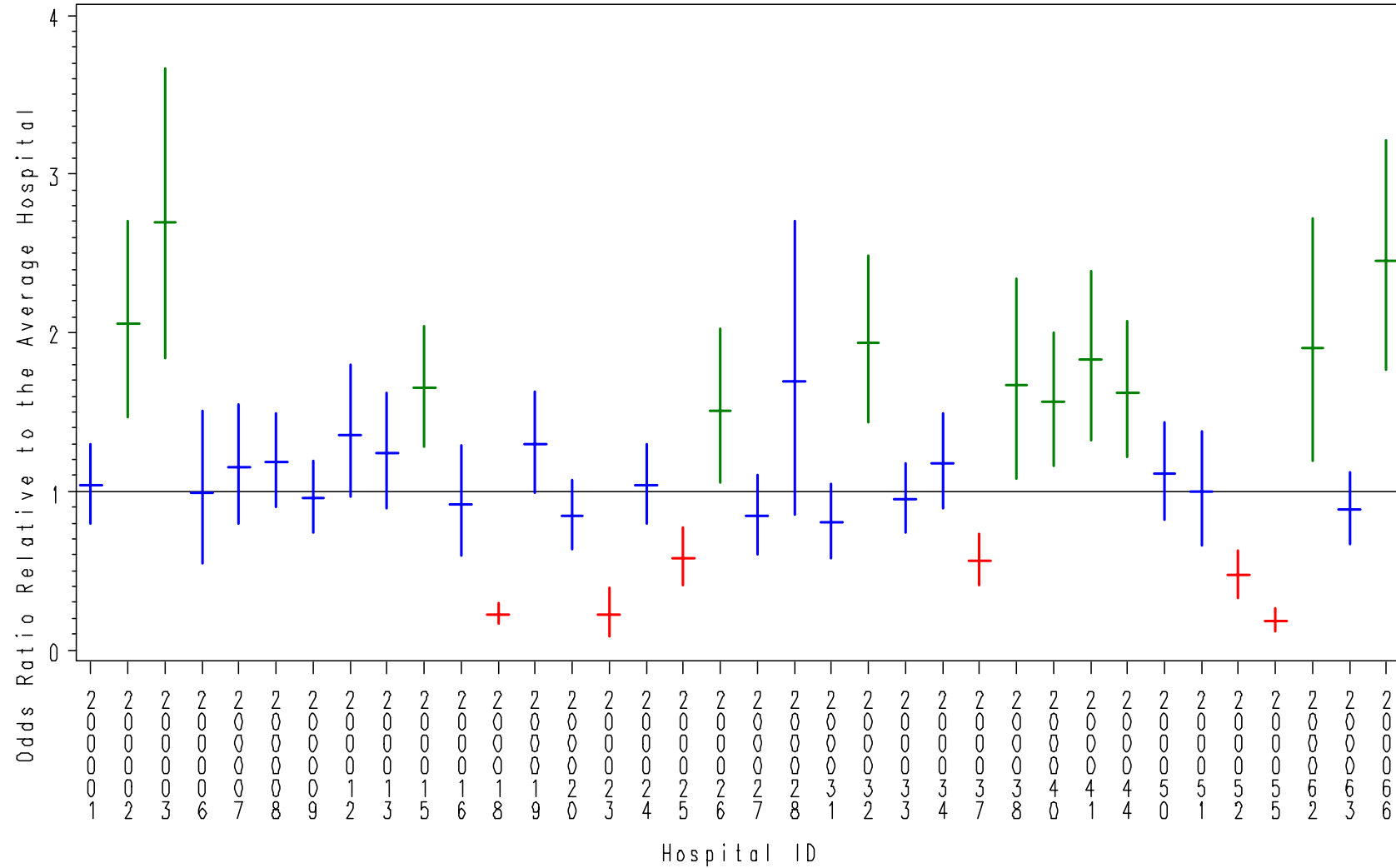
All Maine Hospitals

[Similar Maine Hospitals](#)

[Best Maine Hospitals](#)

Hospital Comparisons to the Average

All Measures



Hospital Quality Class



Above Average



Average



Below Average

MQF

Incomplete without accompanying

Dirigo Health Agency

discussion

Variation Data Update

- First look 2005 data, no impact from public discussion
- ? What are the next steps ?
 - Public media
 - Geographically targeted outreach to PCP and patients
 - Work with payers
 - Mandatory Second opinion
 - Predictive modeling and intervention

Executive Committee

Gus Lambrew, MD, MACC (Chair & Project Medical Director), Maine Medical Center

Steve Diaz, MD, Maine EMS and MaineGeneral Medical Center

Darlene Glover, RN, MSN, Stephens Memorial Hospital

Larry Hopperstead, MD, Central Maine Medical Center

Mirle Kellett, MD, FACC, Maine Medical Center

Deborah Carey Johnson, RN, Eastern Maine Medical Center

William Phillips, MD, Central Maine Medical Center

Guy Raymond, MD, Northern Maine Medical Center

Dennis Shubert, MD, Maine Quality Forum

Kim Tierney, RN, Maine Medical Center

Debra Wigand, MEd, CHES, Maine CDC Cardiovascular Health Program

Paul vom Eigen, MD, FACC, Northeast Cardiology Associates

HART

Steve Diaz, MD (Chair), Maine EMS & MaineGeneral Medical Center

John Alexander, MD, Maine Medical Center

Alan Azzara, JD, EMT-P, North East Mobile Health Services

Dan Batsie, NREMT-P, Northeastern Maine EMS

Jay Bradshaw, EMT-P, Maine EMS

Mary Harkins Becker, MD, MaineHealth

Donnell Carroll, Southern Maine EMS

Rebecca Chagrasulis, MD, Stephens Memorial Hospital

Richard (Pat) Cochran, MD, FACS, Central Maine Medical Center

Joshua Cutler, MD, FACC, Maine Heart Center (Maine Medical Center)

Norman Dinerman, MD, Eastern Maine Medical Center

David Dumont, MD, Penobscot Valley Hospital

David Ettinger, MD, Penobscot Bay Medical Center

Michael Gibbs, MD, FACEP, Maine Medical Center

Chuck Gill, Central Maine Medical Center

Mark Foure, MD, Miles Memorial Hospital

Larry Hopperstead, MD, Central Maine Medical Center

Susan Horton, RN, MSN, Central Maine Heart & Vascular Institute

Mirle Kellett, MD, FACC, Maine Medical Center

HART continued

Kevin Kendall, MD, FACEP, Central Maine Medical Center
David Kingdon, MPH, NREMT-P, Maine EMS
Joanne LeBrun, MEd, EMT, Tri-County EMS
Paul Liebow, MD, Northeastern Maine EMS
Chris McCarthy, MA, Maine Quality Forum
Kim McGraw, RN, CCEMT-P, FP-C, LifeFlight of Maine
David McKelway, DO, Inland Hospital & Kennebec Valley EMS
Thomas Mockus, RN, Mount Desert Island Hospital
Rick Petrie, EMT-P, Kennebec Valley EMS & Northeastern Maine EMS
George Petropoulos, MD, FACC, Maine Cardiology Associates
Paul Potvin, MD, Northern Maine Medical Center
Jay Reynolds, MD, The Aroostook Medical Center & Aroostook EMS
J. Matthew Sholl, MD, Maine Medical Center
Eliot Smith, MD, York Hospital & Southern Maine EMS
Scott Smith, RN, NREMT-P, Maine EMS
Peter Ver Lee, MD, FACC, Eastern Maine Medical Center
David White, CCEMT-P, United Ambulance
Debra Wigand, M Ed, CHES, Maine Cardiovascular Health Program
Francis (Bill) Zito, Mid-Coast Maine EMS

ACE

Debra Wigand, MEd, CHES (Chair), Maine CDC Cardiovascular Health Program

Carol Bell, Partnership for a Healthy Community

Dona Forke, Healthy Options Together

Chuck Gill, Central Maine Medical Center

Danielle Louder, Maine CDC Cardiovascular Health Program

Cynthia Pernice, MaineHealth

Connie Putnam, Knox County Community Health Coalition

Kelly Roderick, Maine EMS for Children, Kennebec Valley EMS

Dennise Whitley, MHA, American Heart Association

Metrics and Data

Mirle Kellett, MD, FACC (Chair), Maine Medical Center

Richard Chandler, MD, Penobscot Bay Medical Center

Darlene Glover, RN, MSN, Stephens Memorial Hospital

Susan Horton, RN, MSN, Central Maine Heart & Vascular Institute

H. Joel Johnson, RN, CCM, ACS, NovaHealth

Sandra Parker, Esq., Maine Hospital Association

Guy Raymond, MD, Northern Maine Medical Center

Kim Tierney, RN, Maine Medical Center

Peter Ver Lee, MD, FACC, Eastern Maine Medical Center

Paul vom Eigen, MD, FACC, Northeast Cardiology Associates

David White, CCEMT-P, United Ambulance

Thank you for support provided by:

- Taxpayers of Maine, Dirigo Health Agency/Maine Quality Forum
- Governor's Office of Health Policy and Finance
- Maine Health Access Foundation
- Bingham Fund