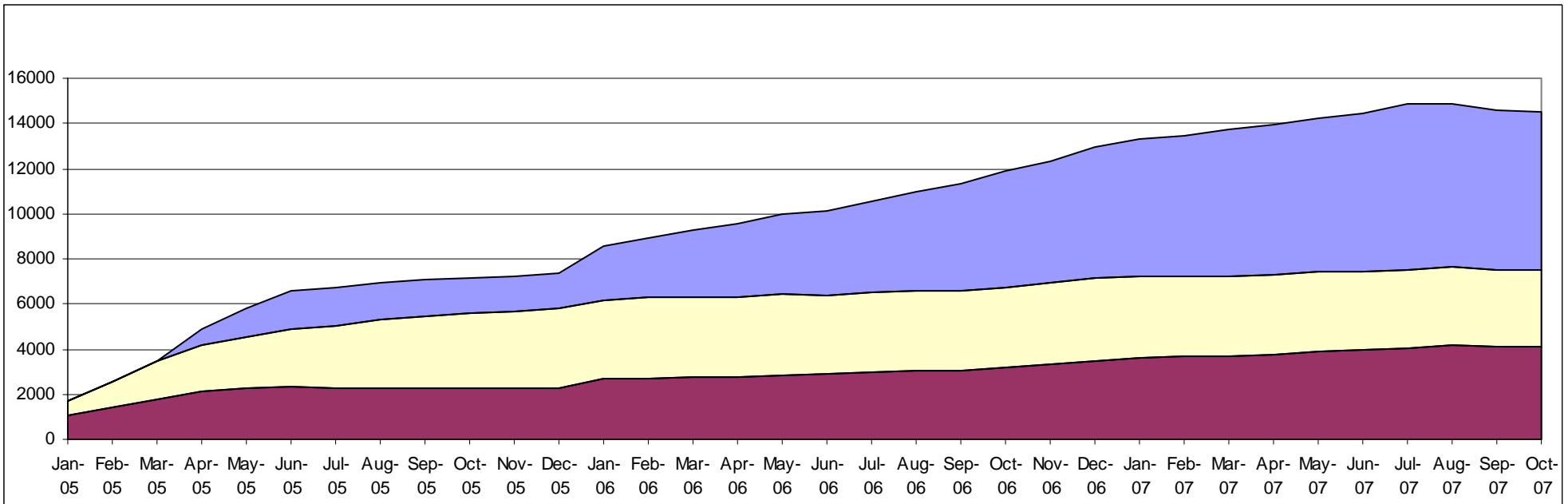
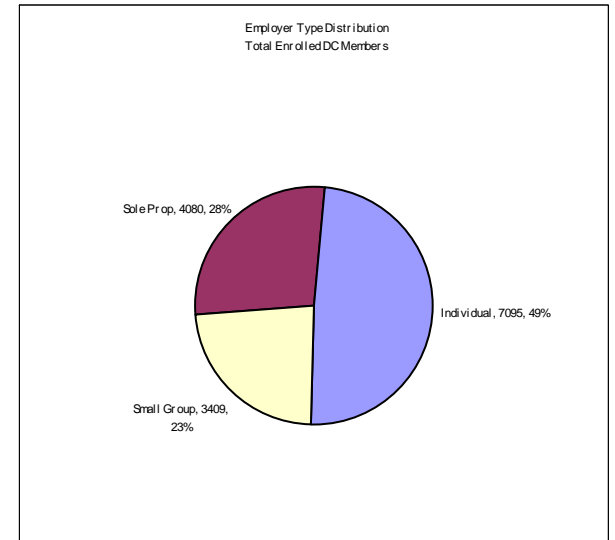
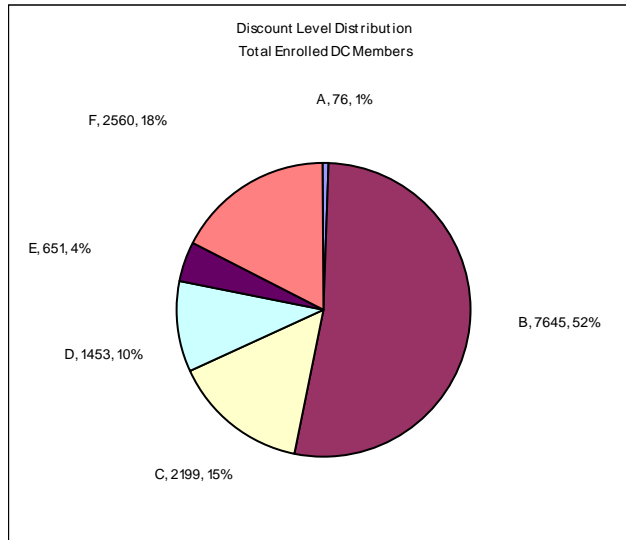


# Dirigo Health Monthly Numbers October 2007 Reported by Dirigo Health Agency 11/07/2007

Total Members Served, DC + Parents	27935
New DC Members	138
Total Enrolled DC Members	14536
Total Enrolled DC Small Groups	721
Total Enrolled Parents	5533
New Parents	0
DC Annual Coverage Costs	\$60,033,141.97
Member & Employer Share	\$27,463,935.99 (46%)
Dirigo Share	\$32,569,205.98 (54%)
Annual Subsidy PMPM (98% to projected)	\$226.91



1. Total Members Served refers to the total number of members ever enrolled (beginning 01/01/2005) for any period of time in the DirigoChoice or MaineCare Parent Expansion programs
2. Total New Members refers to the number of new members enrolled in the reporting month.
3. Total Enrolled Members refers to the number of members currently enrolled in the reporting month.
4. Annual subsidy PMPM is the average "per member per month" cost for the Agency in 2007.
5. Parent Expansion numbers do not include July data.